



GIFT OF LIFE

A Patient's Guide to Organ, Tissue and Eye Donation

For more information call
800-831-4131
or visit **iadn.org**



FREQUENTLY ASKED QUESTIONS

Am I too sick to donate?

Although not everyone will be eligible for donation, do not rule yourself out. Let Iowa Donor Network's (IDN) screening process determine whether or not donation is possible.

Is a traditional funeral service an option?

Donation does not affect customary funeral activities, therefore an open casket funeral or viewing is possible.

Will there be a cost for donation?

There is no cost to the donor family for donation.

Am I too old to donate?

Anyone of any age can donate.

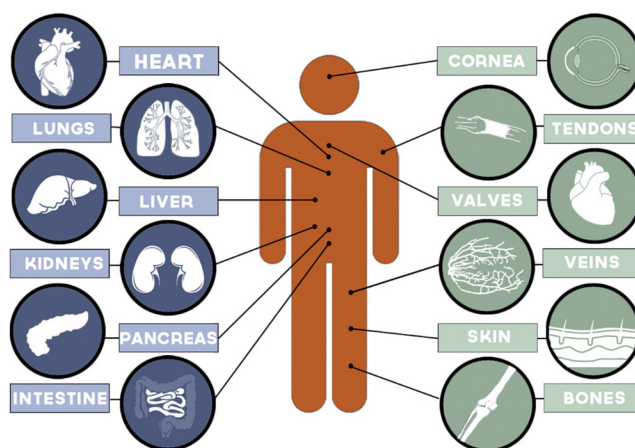
What type of support will my family receive following donation?

IDN has a support program for families including grief resources and donation updates.

Will my family need to complete any paperwork?

Before donation can occur, a medical and social history questionnaire is required to be completed by family members after time of death. This information is essential to maximizing the gift of donation.

WHAT CAN BE DONATED?



DONATION FAST FACTS

- Donation can help families with the grieving process.
- More than one million tissue transplants are done each year, and the surgical need for tissue has been steadily rising.
- Cornea transplants have over a 95% success rate.
- One donor can save the lives of up to 8 people and enhance the lives of more than 50 people.

Register online at **www.iadn.org** and share your donation decision with your family and healthcare team.